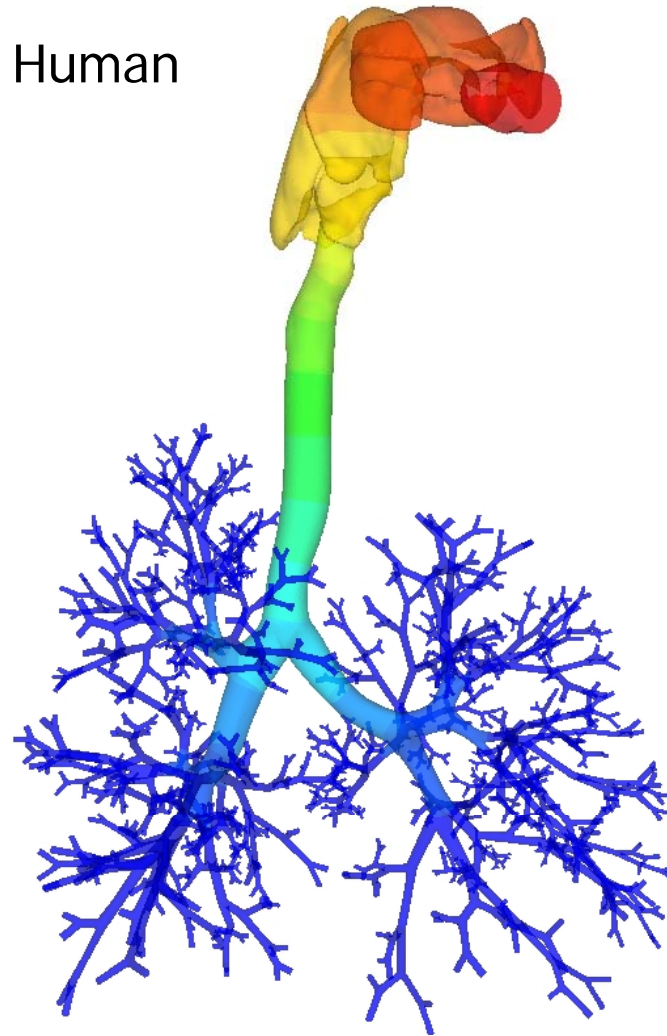
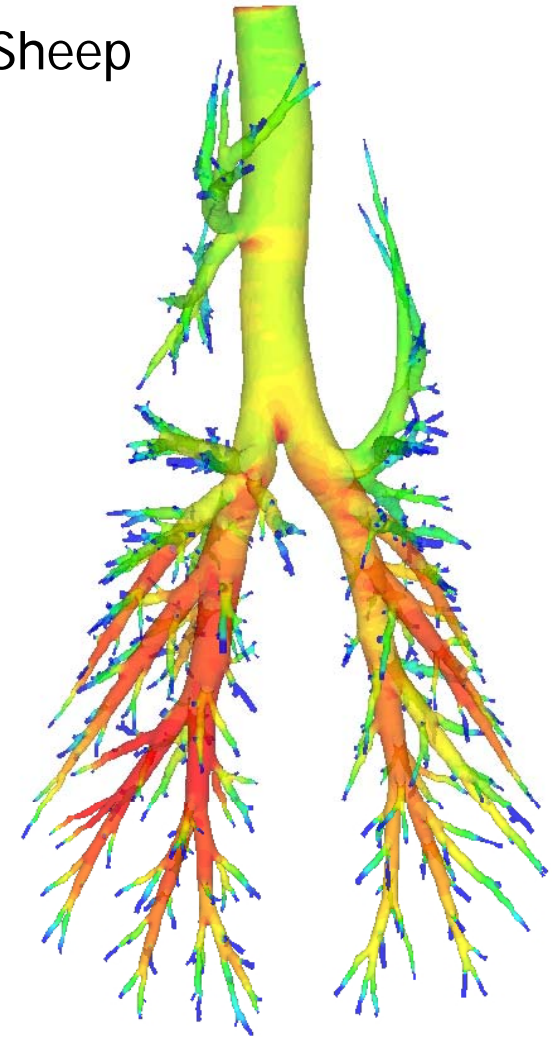


# Multi-scale Simulation of Pulmonary Air Flow

Human

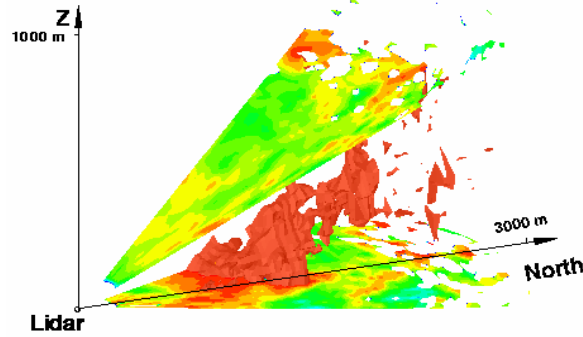


Sheep

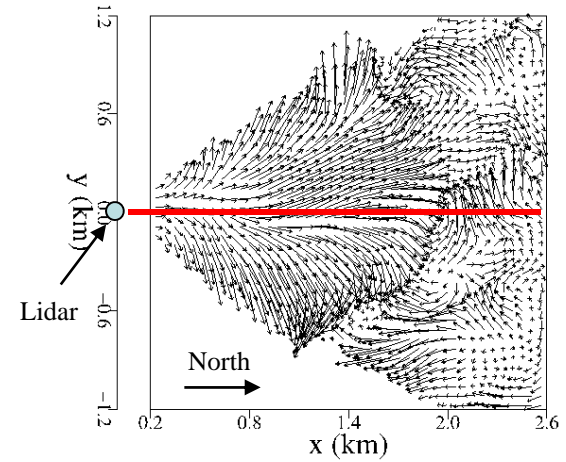


ching-long-lin@uiowa.edu

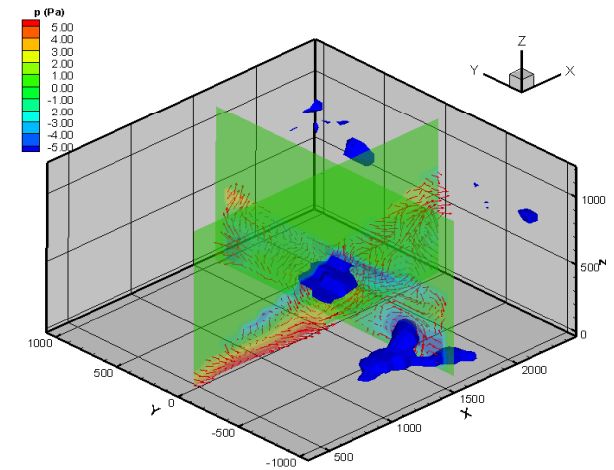
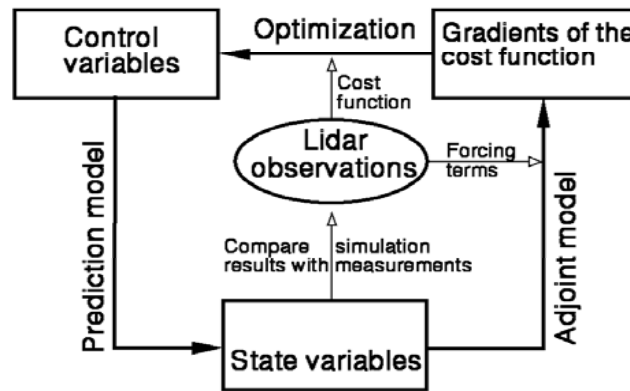
# 4D Variational Data Assimilation



Lidar radial velocity in ABL (Dr. Newsom)



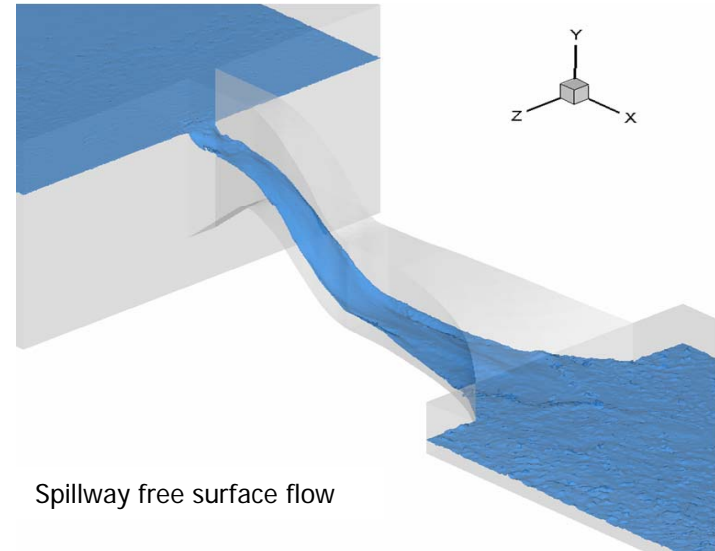
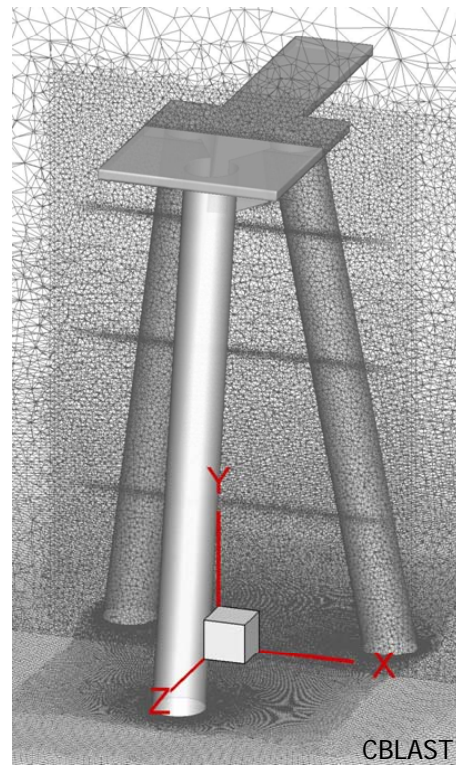
Retrieved 3D wind field



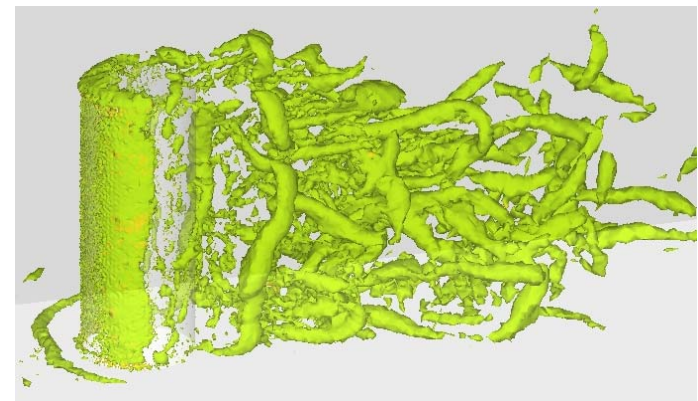
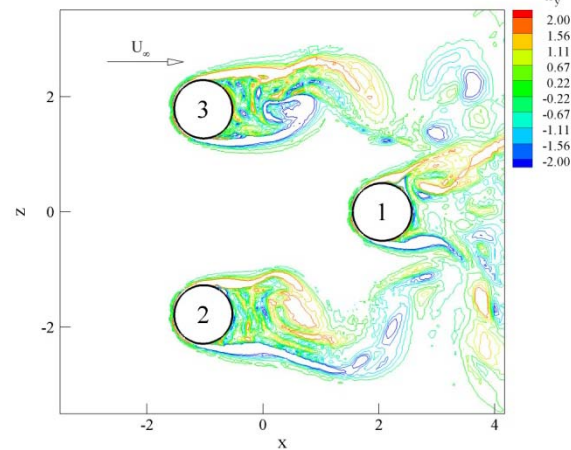
Retrieved coherent structures

ching-long-lin@uiowa.edu

# Large-Eddy Simulation & Two Phase Flow



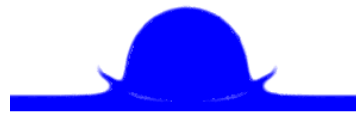
Spillway free surface flow



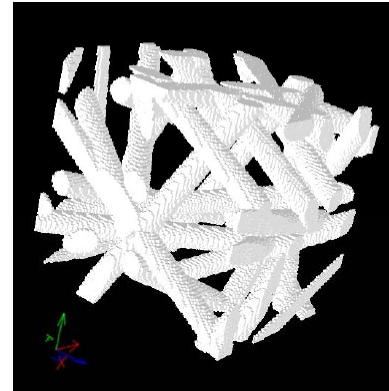
Coherent vortices in flow over a cylinder

ching-long-lin@uiowa.edu

# Mesososcopic Lattice Boltzmann Simulation

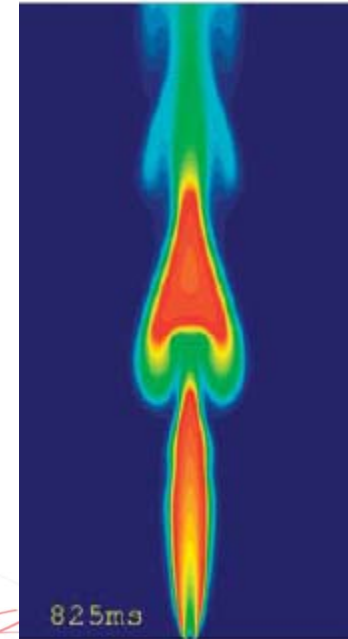
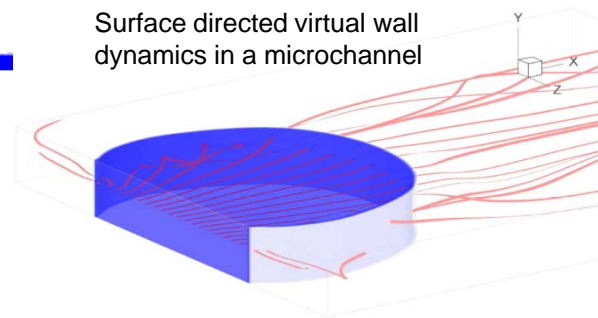


Impact of a liquid droplet on a thin liquid film



Micro flow through a fibrous porous media at various Knudsen number

Surface directed virtual wall dynamics in a microchannel

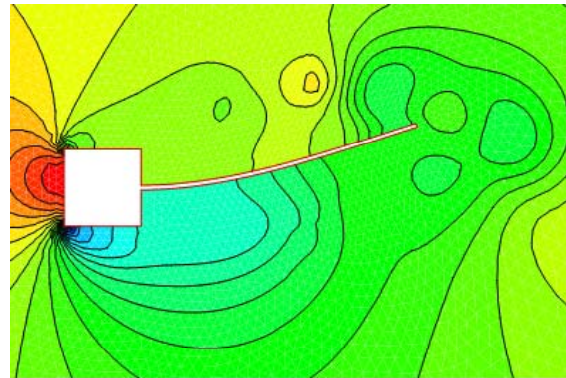


Laminar jet diffusion flame

ching-long-lin@uiowa.edu

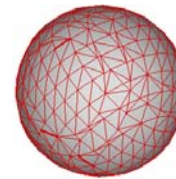
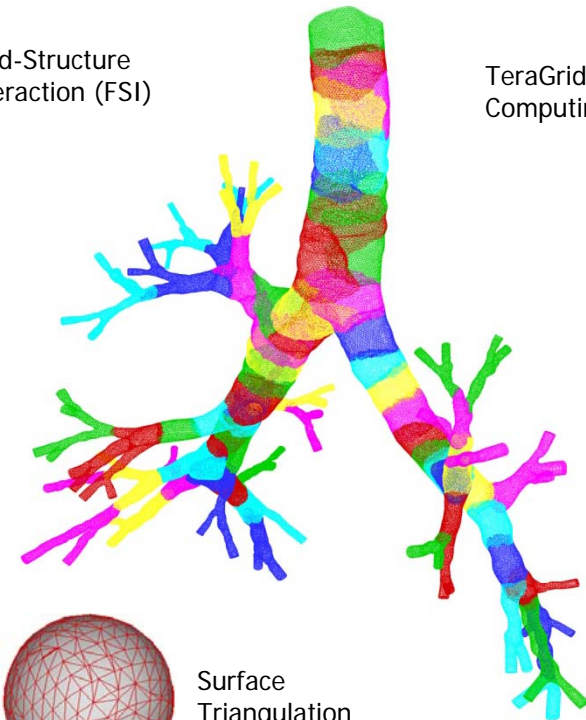


# Fluid-Structure Interaction, Particulate Flow, Parallel Computing & Geometric Modeling

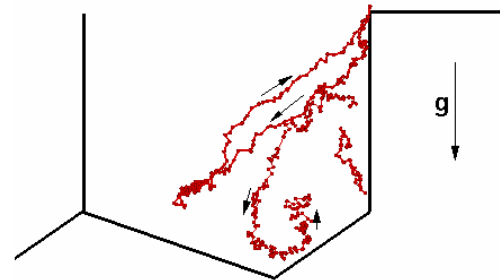


Fluid-Structure Interaction (FSI)

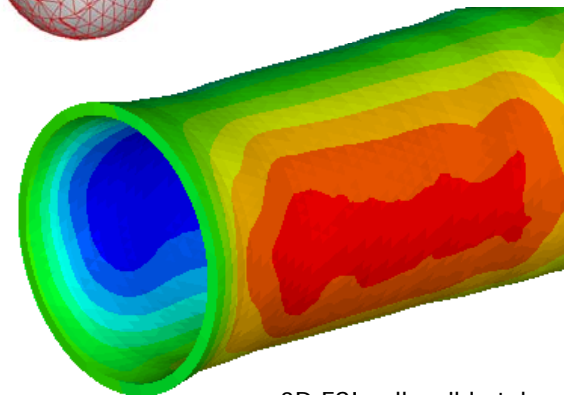
TeraGrid Computing



Surface Triangulation



Aerosol transport in 3D alveolar sacs with moving walls



3D FSI collapsible tube

ching-long-lin@uiowa.edu