

## Visual Studio.NET Users:

You can now access your Visual Studio.NET programming environment from any WindowsXP or Windows 2000 computer. To do so:

Go to **Start | Run** and type “**mstsc**”.

A new window will open up. Click the button labeled “Options”. The window will expand with several spaces for you to fill in.

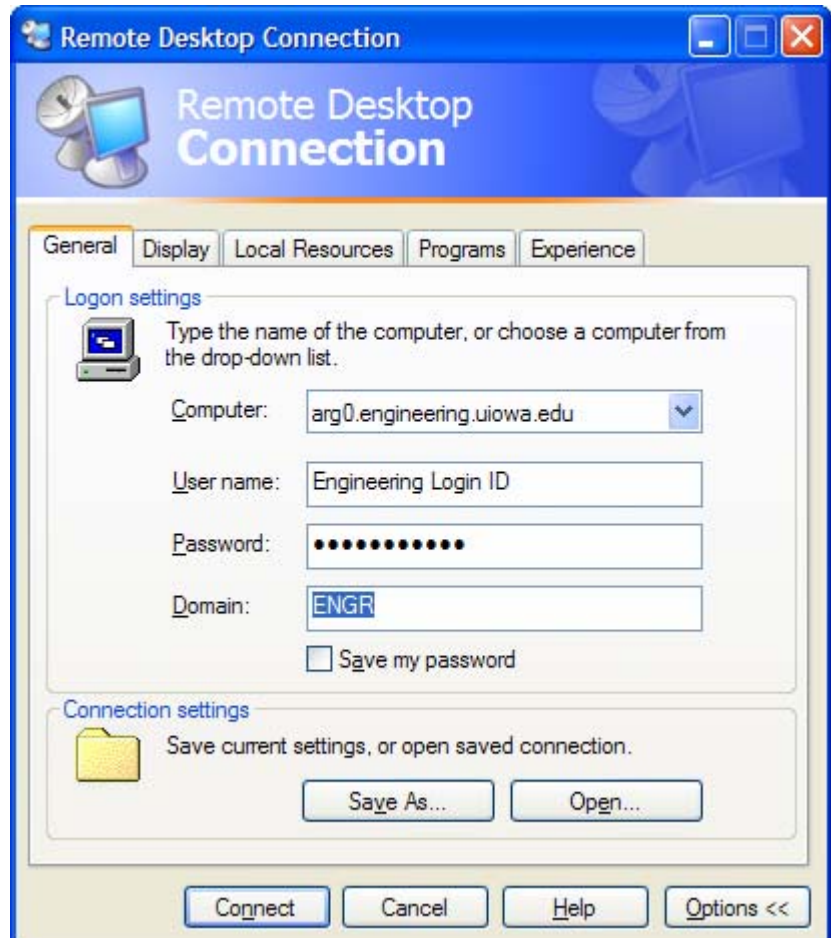
For **Computer** put in the name of the terminal server **arg0.engineering.uiowa.edu**

For **User Name** put in your **Engineering login** name.

For **Password** use your **engineering password**.

For **Domain** use the domain **ENGR**.

Make sure you have not checked the box to save your password.



Optional –

Click the tab labeled “Experience”. Click the menu box and choose “LAN”. This will give you better visual effects and make it seem more realistic.

Remember to go to **Start | Logout** and then verify that you want to disconnect after you are finished.

If you inadvertently place your program in an infinite loop, move the cursor to the toolbar at the bottom of the screen, click the right mouse button, and start the “**Task Manager**.” Go to the applications folder, highlight MILP, and “**End Task**.”

For assistance call 5-5055.