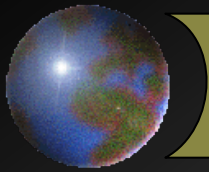


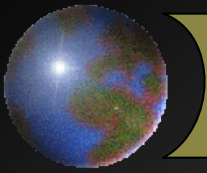
Lesson 4: Precipitation

53:171

Water Resources Engineering



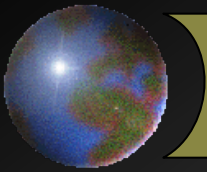
Precipitation Measurement Techniques



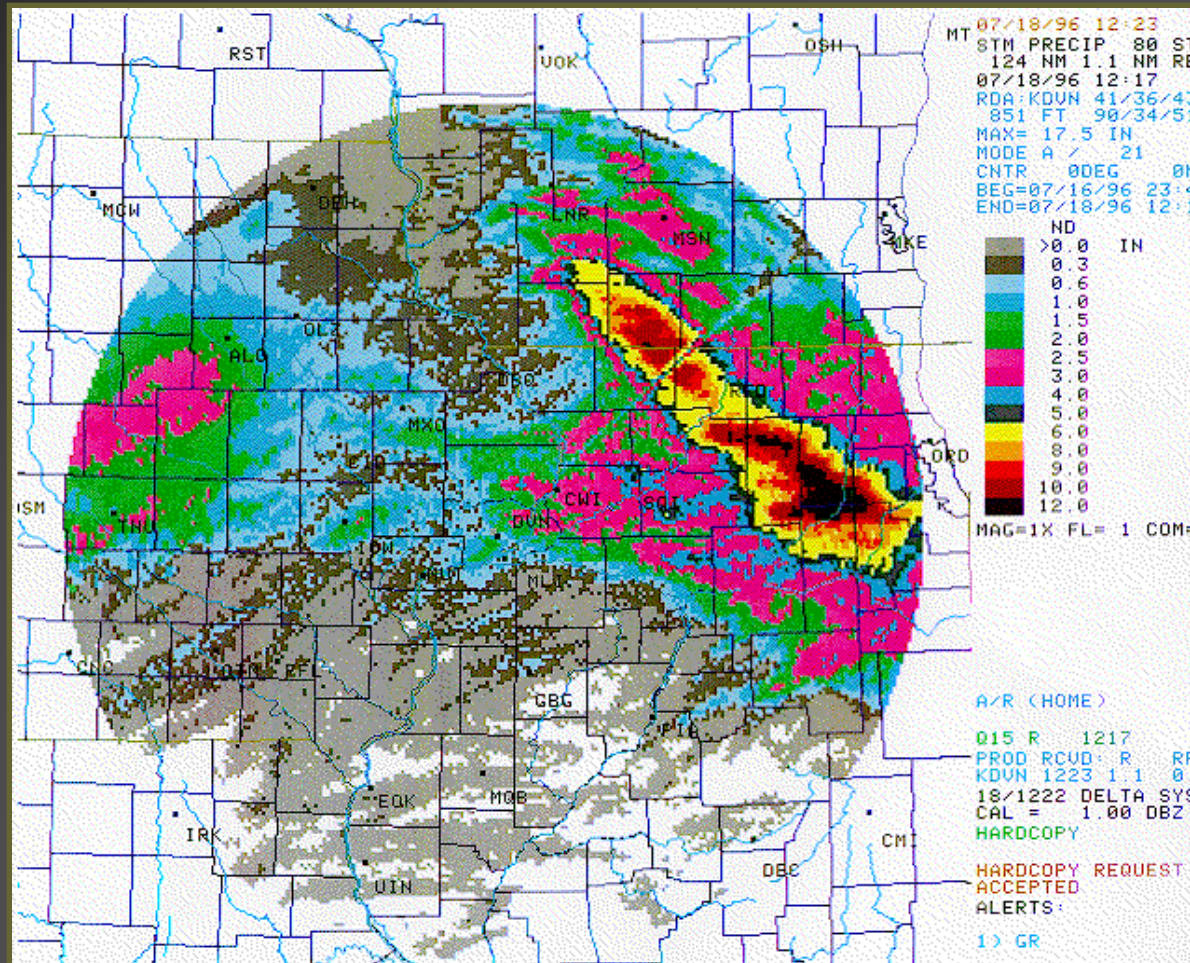
Precipitation Gauges



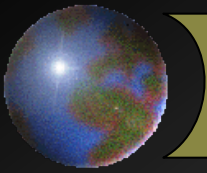
Tipping
Bucket
Rain
Gauges



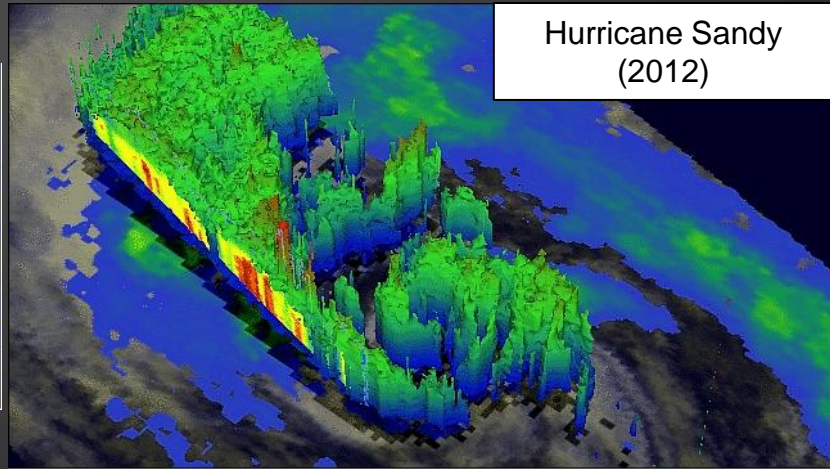
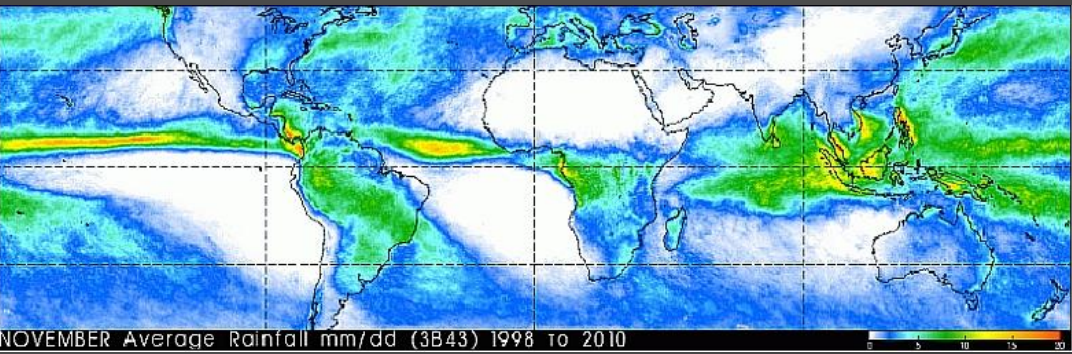
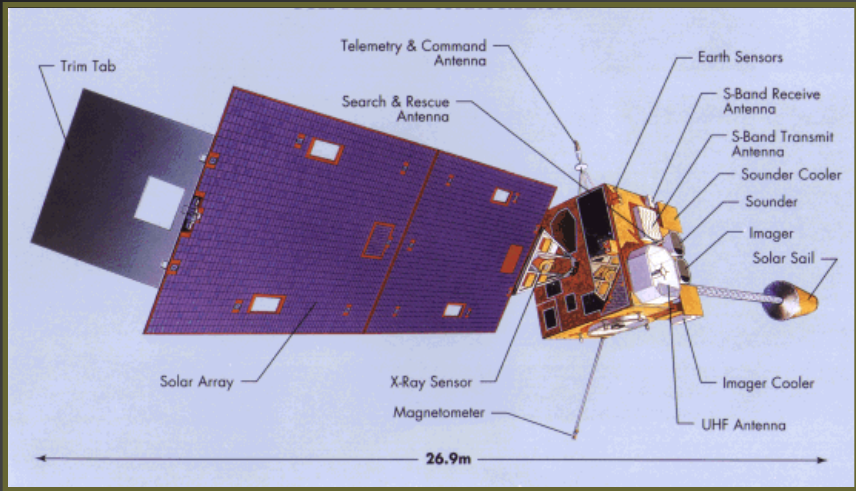
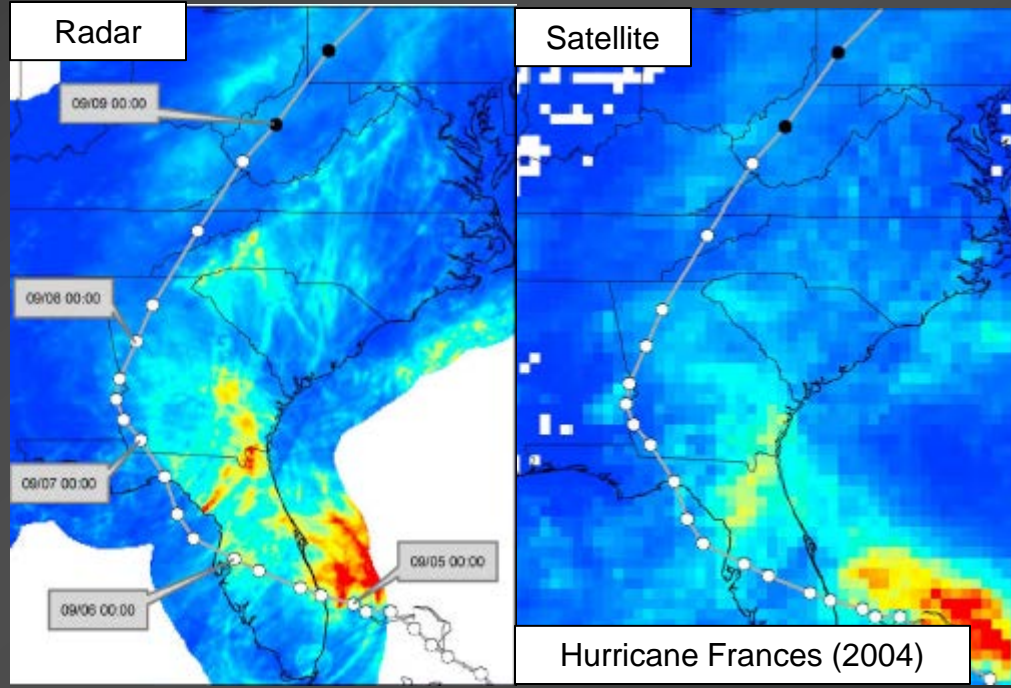
Weather Radar

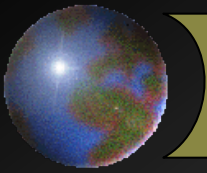


NEXRAD
weather
radar for
the 17-18
July 1996
Illinois
flood



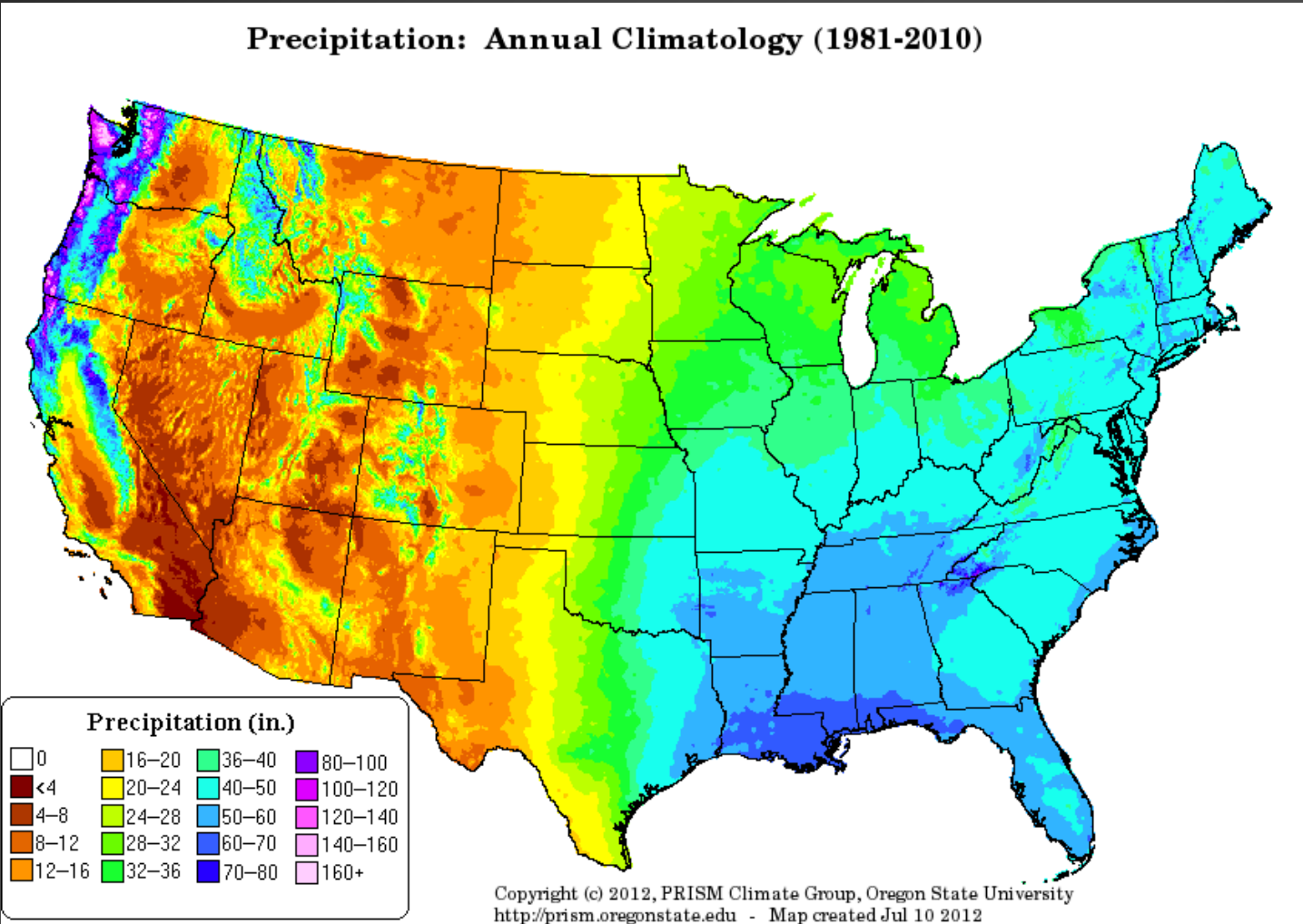
Satellite

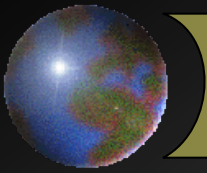




Precipitation

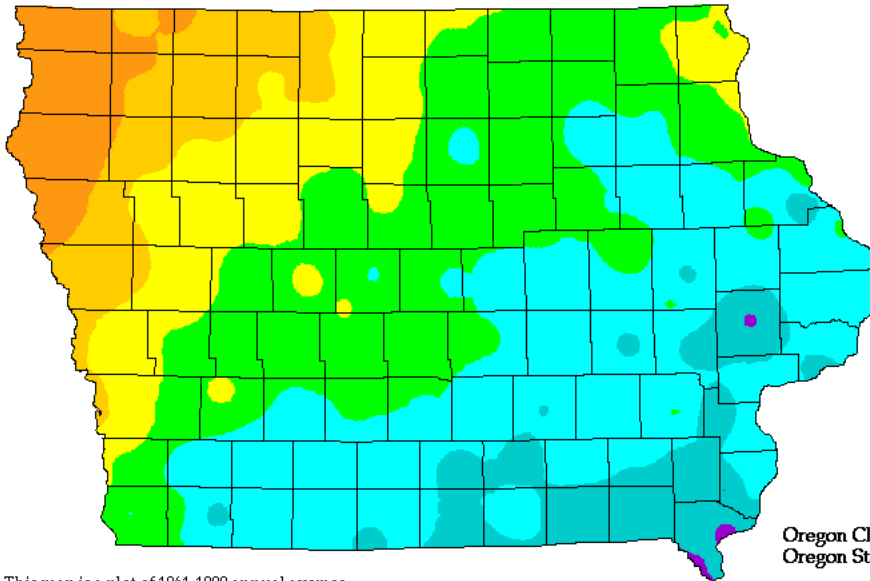
Precipitation: Annual Climatology (1981-2010)





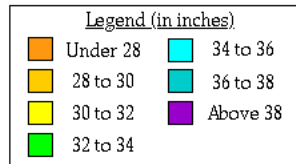
Precipitation (Iowa)

Average Annual Precipitation
Iowa



Oregon Climate Service
Oregon State University

This map is a plot of 1961-1990 annual average precipitation contours from NOAA Cooperative stations and (where appropriate) USDA-NRCS SNOTEL stations. Christopher Daly used the PRISM model to generate the gridded estimates from which this map was derived; the modeled grid was approximately 4x4 km latitude/longitude, and was resampled to 2x2 km using a Gaussian filter. Mapping was performed by Jenny Weisberg and Nathaniel DeYoung. Funding was provided by USDA-NRCS National Water and Climate Center.



Period: 1961-1990

Copyright 2000 by Spatial Climate Analysis
Service, Oregon State University